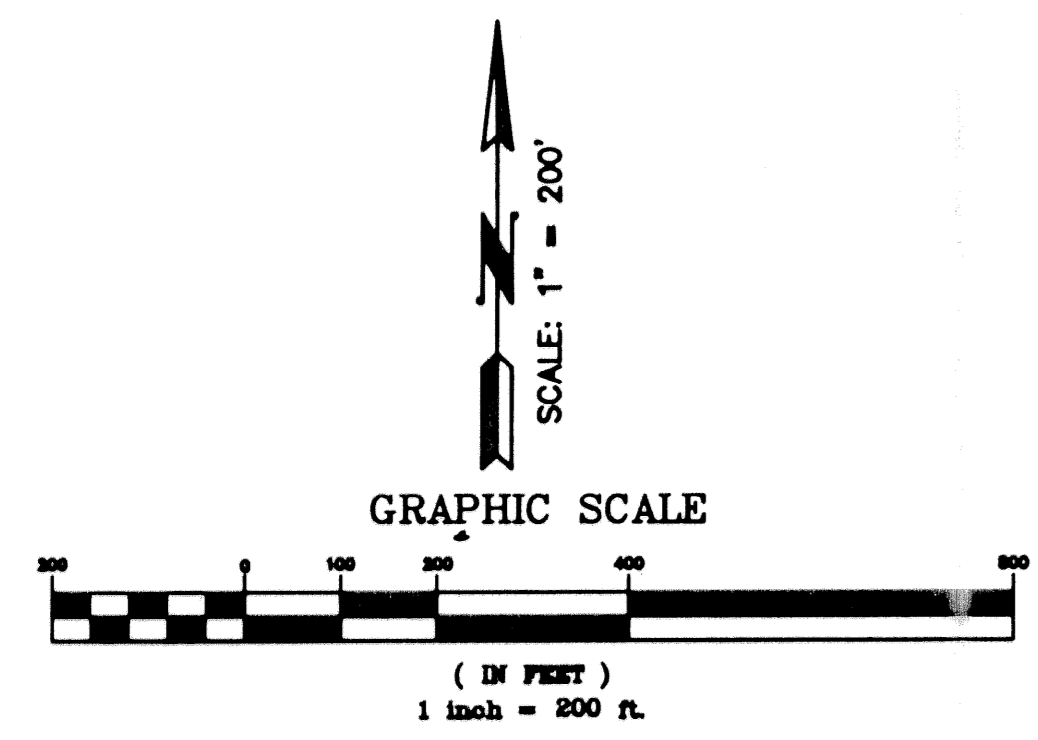


# OLD PALM PLAT 1

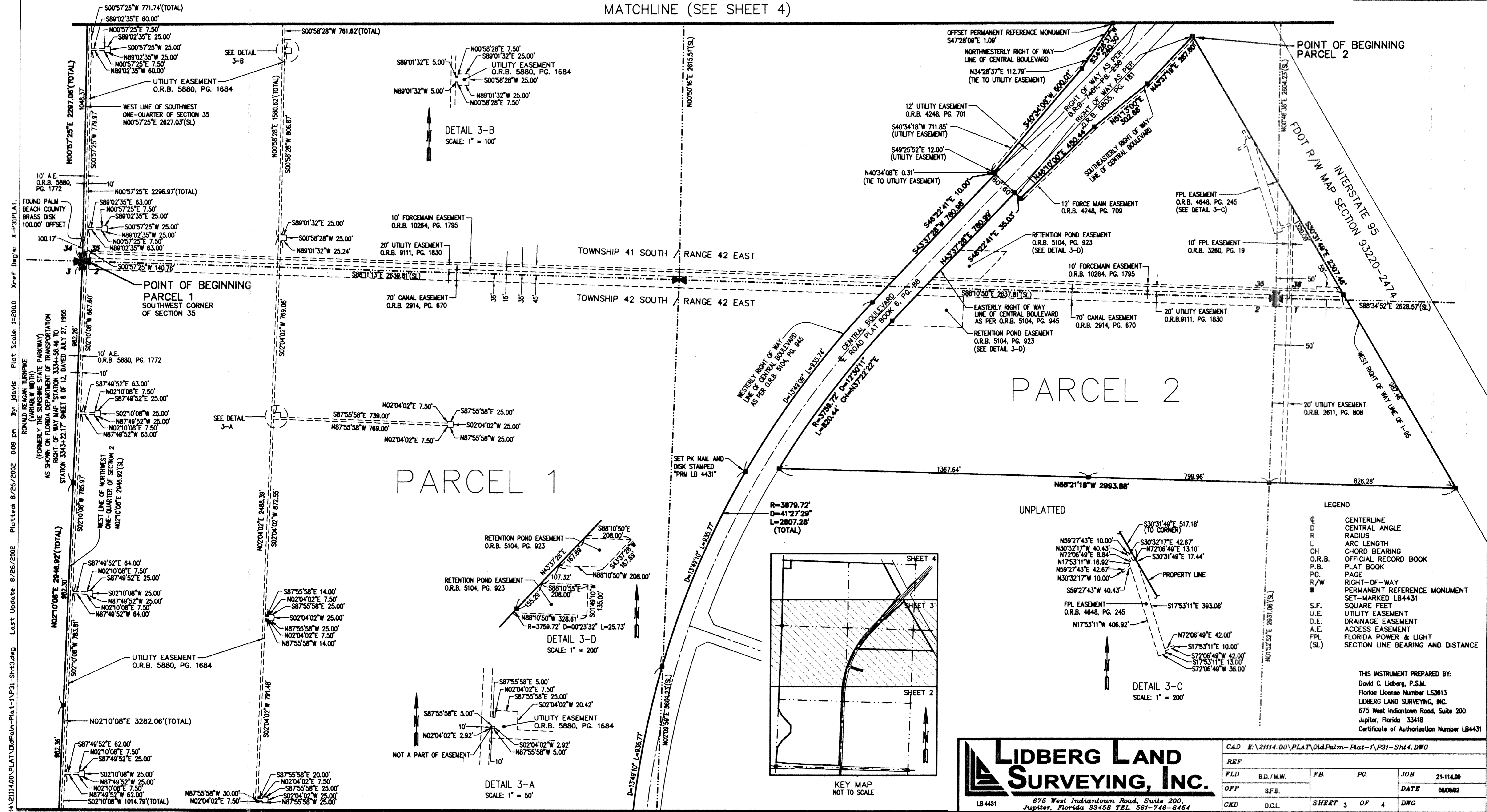
LYING IN SECTIONS 35 AND 36, TOWNSHIP 41 SOUTH, RANGE 42 EAST  
AND SECTIONS 1 AND 2, TOWNSHIP 42 SOUTH, RANGE 42 EAST  
CITY OF PALM BEACH GARDENS, PALM BEACH COUNTY, FLORIDA  
SHEET NO. 3 OF 4

AUGUST 2002

STATE OF FLORIDA  
COUNTY OF PALM BEACH  
This plat was filed for  
record at \_\_\_\_\_ this day  
of \_\_\_\_\_ 2002, and duly  
recorded in Plat Book No. \_\_\_\_\_  
on Pages \_\_\_\_\_ thru \_\_\_\_\_  
DOROTHY H. WILKEN  
Clerk Circuit Court  
By \_\_\_\_\_ D. C.

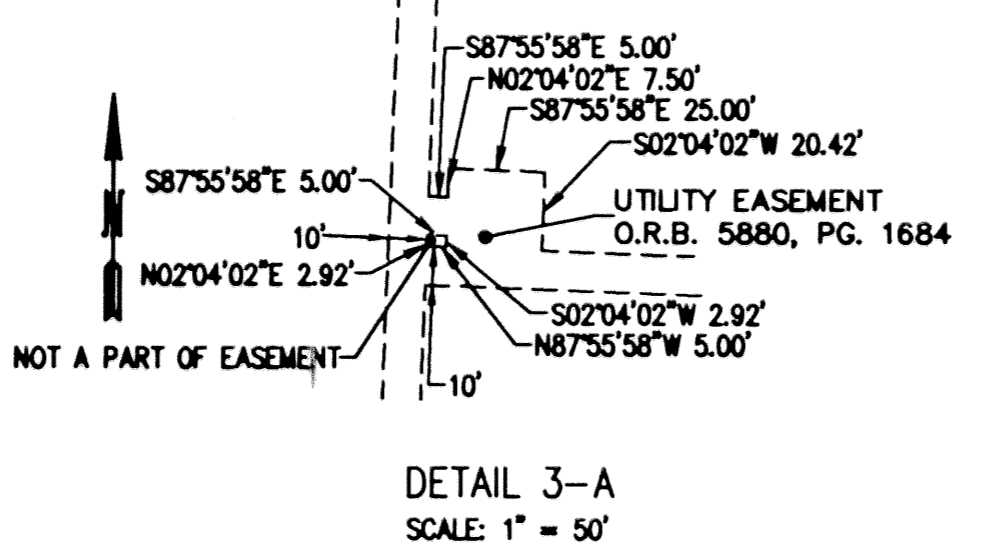
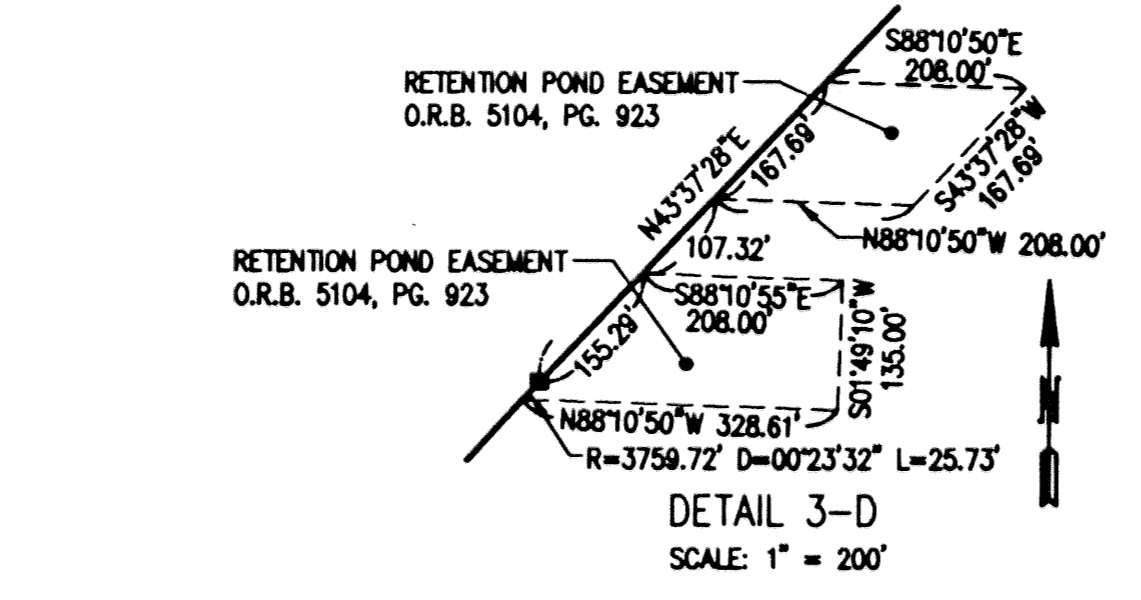


MATCHLINE (SEE SHEET 4)

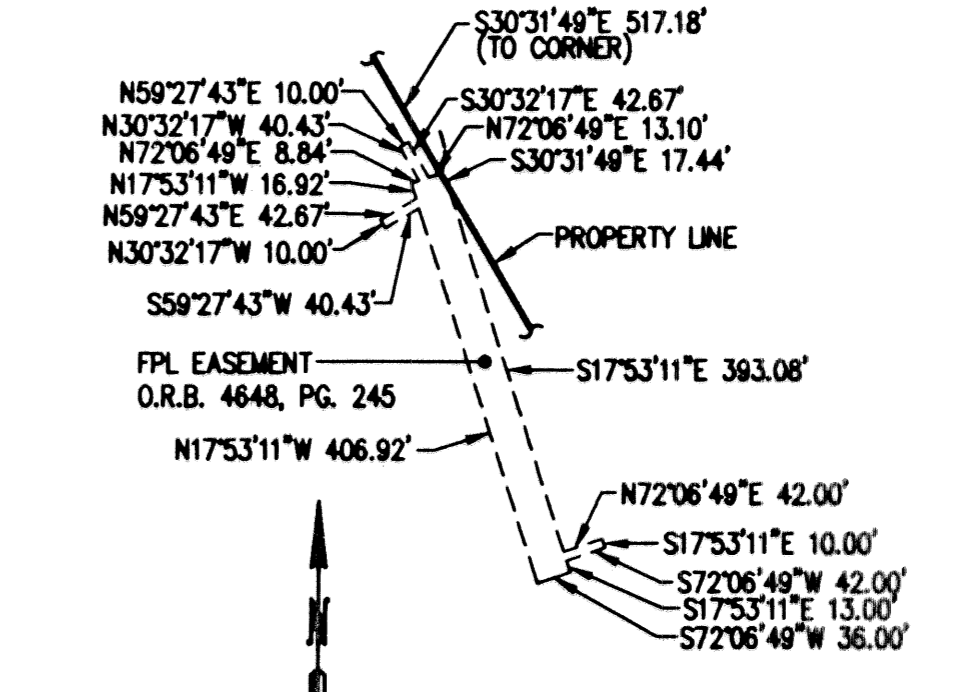


PARCEL 1

PARCEL 2



UNPLATTED



LEGEND

C	CENTERLINE
D	CENTRAL ANGLE
R	RADIUS
L	ARC LENGTH
CH	CHORD BEARING
O.R.B.	OFFICIAL RECORD BOOK
P.B.	PLAT BOOK
P.G.	PAGE
R/W	RIGHT-OF-WAY
■	PERMANENT REFERENCE MONUMENT
■	SET-MARKED LB4431
S.F.	SQUARE FEET
U.E.	UTILITY EASEMENT
D.E.	DRAINAGE EASEMENT
A.E.	ACCESS EASEMENT
FPL	FLORIDA POWER & LIGHT
(SL)	SECTION LINE BEARING AND DISTANCE

THIS INSTRUMENT PREPARED BY:  
David C. Libberg, P.S.M.  
Florida License Number LS3613  
LIBBERG LAND SURVEYING, INC.  
675 West Indian Town Road, Suite 200  
Jupiter, Florida 33418  
Certificate of Authorization Number LB4431

**LIBBERG LAND SURVEYING, INC.**  
675 West Indian Town Road, Suite 200,  
Jupiter, Florida 33458 TEL 561-746-8454  
LB 4431

CAD E:\21114.00\PLAT\OldPalm-Plat-1\P31-SM4.DWG				
REF				
FLD	B.D./M.W.	P.B.	P.G.	JOB 21-114.00
OFF	S.F.B.			DATE 08/08/02
CKD	D.C.L.	SHEET 3 OF 4	DWG	

MATCHLINE (SEE SHEET 2)

HA:21114.00\PLAT\OldPalm-Plat-1\VP31-SM4.dwg Last Update: 8/26/2002 Plotted: 8/26/2002 008 pm By: Jarvis Plot Scale: 1=200.0 X-ref: Dwg's: X-P31PLAT, RONALD REAGAN TURNPIKE (FORMERLY THE PALM BEACH STATE PARKWAY) AS SHOWN ON FLORIDA DEPARTMENT OF TRANSPORTATION RIGHT-OF-WAY MAP, STATION 334+58.45 TO 334+58.45, TO STATION 334+32.17, SHEET 8 OF 12, DATED JULY 27, 1985